

# novuma®

Collagen  
Stimulating +

Dermal Filler

CaHA  
burgeon.me



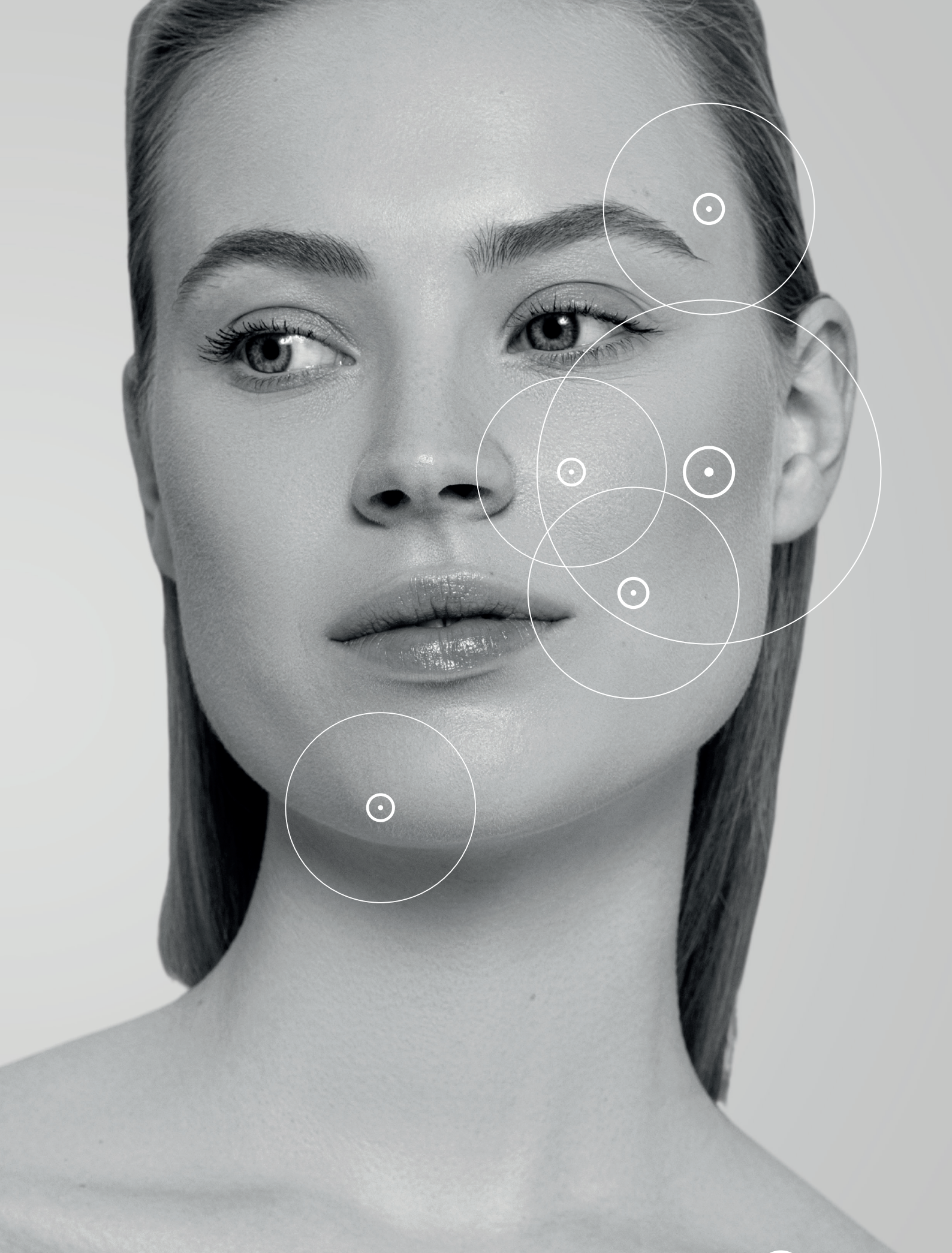
  
BURGEON

# Sharper More Prominent Features

## NOVUMA<sup>®</sup>

A novel product offering more prominent and sharper touches in jaw and jawline, a strong lifting effect for nasolabial folds and marionette lines, augmentation of desired areas in cheeks, fullness effect for anti-aging touches on the hand surface.





# WHAT IS COLLAGEN? WHAT DOES IT DO?

Collagen is the main structural protein of our body found in bones, muscles, tendons, and skin. The main function of this protein is to support the tissues and to help tissues or organs look youthful and flexible.

---

# WHAT ARE THE BENEFITS OF COLLAGEN?

Collagen found in skin and muscles is responsible for strengthening our connective tissues. Collagen gives our skin endurance, flexibility, and youthfulness.

---

# WHAT HAPPENS IN CASE OF COLLAGEN DEFICIENCY?

Collagen is generated frequently in our body during young ages; however, collagen generation decreases by 10-20% after the age of 30. Collagen amount is affected not only by old age but also various factors such as changes in eating habits, environmental factors, stress, smoking, and exposure to sun. The dramatic decrease in collagen generation causes an exhausted look on the face as well as resulting in skin problems such as wrinkles, lines, asymmetry, and folds. In addition to skin problems, articular cartilages weaken, and bones lose their strength. Collagen that plays a key role in these processes can be stimulated with dermal fillers.

---



# novuma<sup>®</sup> COLLAGEN-STIMULATING DERMAL FILLER

Novuma injectable implant is used as subdermal implantation to correct moderate-to-severe facial wrinkles and folds such as nasolabial, and to eliminate the manifestations of facial fat tissue loss (lipoatrophy).

The growth of connective tissue replacing the gel-type carrier is completed within a couple of months thanks to the stimulating microspheres in the product.

The defective area is filled with autologous connective tissue over time. The total bioavailability of hydroxyapatite microspheres is predictable, controllable, and adjustable thanks to its unique physical characteristics.

Novuma can be used in cheekbones, nasolabial folds, jaw, jawline, jowls, lower cheeks, nasal bridge, oral commissures, and smile lines.



# AWAKEN THE BEAUTIFUL YOU

With Novuma, you can obtain natural results, awaken the beautiful you, and have a more dynamic, fresh, and youthful look.

Novuma stimulates collagen. Provides a lifting and recovery effect for your face from the moment of injection. In the long term, it increases the activation of fibroblasts and enables your skin to produce natural collagen.

It provides the patients with meaningful and positive aesthetic results and a high rate of satisfaction with its clinically proven sustained effect between 12-24 months.



Easily shaped with its adhesive gel form.



# SKIN REJUVENATION

Deep injection is applied in the subcutaneous structure, deep dermis, or subdermal tissue layer.

## +COLLAGEN STIMULATION

Fibroblasts are stimulated along with the lifting effect after injection.

.....

## +COLLAGEN BOOST

It transforms into Type (I) collagen from Type (III) collagen.

.....

## +SKIN QUALITY

The skin quality and the thickness of the skin improves significantly with the collagen boost and enhances over time. It gives a healthy and bright look.

.....

## +ELASTICITY

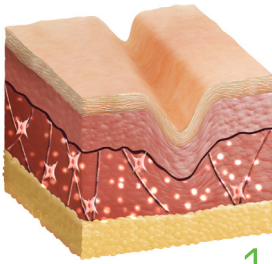
Increased elastin results in a flexible and redefined skin.

+ Novuma application provides a instant and strong lifting effect.

+ Prominent and defined look with the augmentation of cheeks, jawline, and jaw.

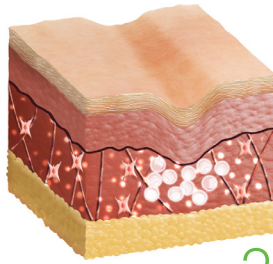
+ Correction of deep nasolabial folds and marionette lines.

+ Volume restoration in facial fat loss and age-related volume loss in hands.



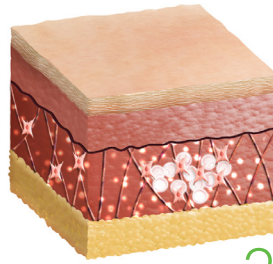
1

An old and deformed skin texture before application.



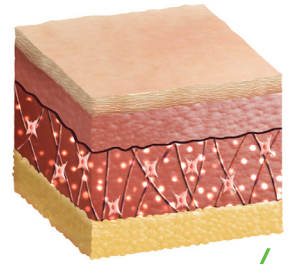
2

Instant lifting effect after application



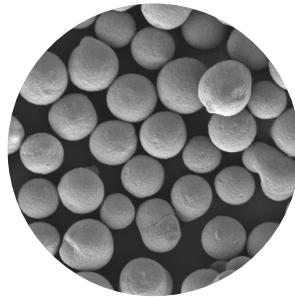
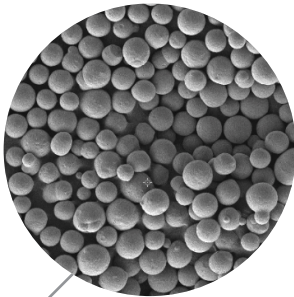
3

The collagen generation begins with the mechanic stimulation of fibroblasts.



4

The skin is boosted by increasing the skin quality, and a bright and smooth look is obtained in the long term.



Electron microscope images of 25 to 45 micron sized Calcium Hydroxyapatite microspheres suspended in a gel carrier.

- Homogeneous Distribution
- Smooth Surface
- High Tissue Compatibility





# APPLICATION AREAS

Novuma offers instant and natural results with collagen boost and lifting effect.



Nasolabial Folds



Hands



Cheeks



Jawline



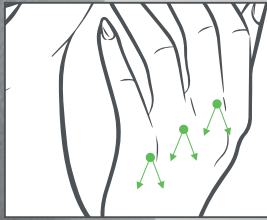
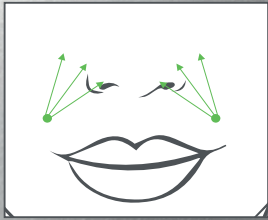
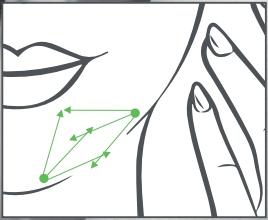
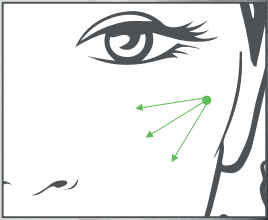
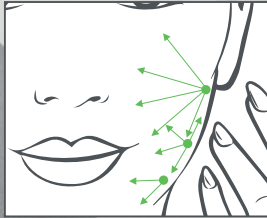
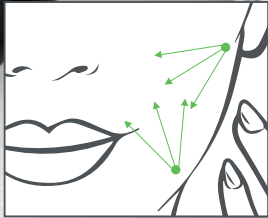
Jaw



Marionette Lines



## INJECTION TECHNIQUES



# PRODUCT OVERVIEW

**Gel Structure**  
Easy to inject.

**Content**  
It consists of 55-60% (w/w) CaHA microspheres by weight in the Carboxymethyl Cellulose gel carrier and the microsphere radius is 25-45 microns.

**Effectiveness**  
Instant filler effect, skin rejuvenation, lifting and contour, and collagen boost by fibroblast stimulation.

**Durability**  
Sustained effect for 12-24 months.

**Safety**  
100% bioactive ingredient with CE certification.

**Packaging**  
1 x 1.5cc





## PRODUCT FEATURES

Apparent veins and tendons,  
Dryness, wrinkles, and skin thinning in  
the hands,  
Loss of skin volume and vitality,  
Decreased volume in the hands,

It is effective in augmenting the jaw and  
jawline.

It provides intense lifting and correction  
with its volumizing effect.

The 2-in-1 product boosts collagen levels  
in the skin along as well as volumization.

It's 100% biocompatible and  
biodegradable.

It is injected into deep dermis and  
sub-dermis.

BUR-CTL.09.01.05 rev:03 Publishing Date: 15.05.2020 Rev. Date: 19.10.2022



**Novum<sup>®</sup>**